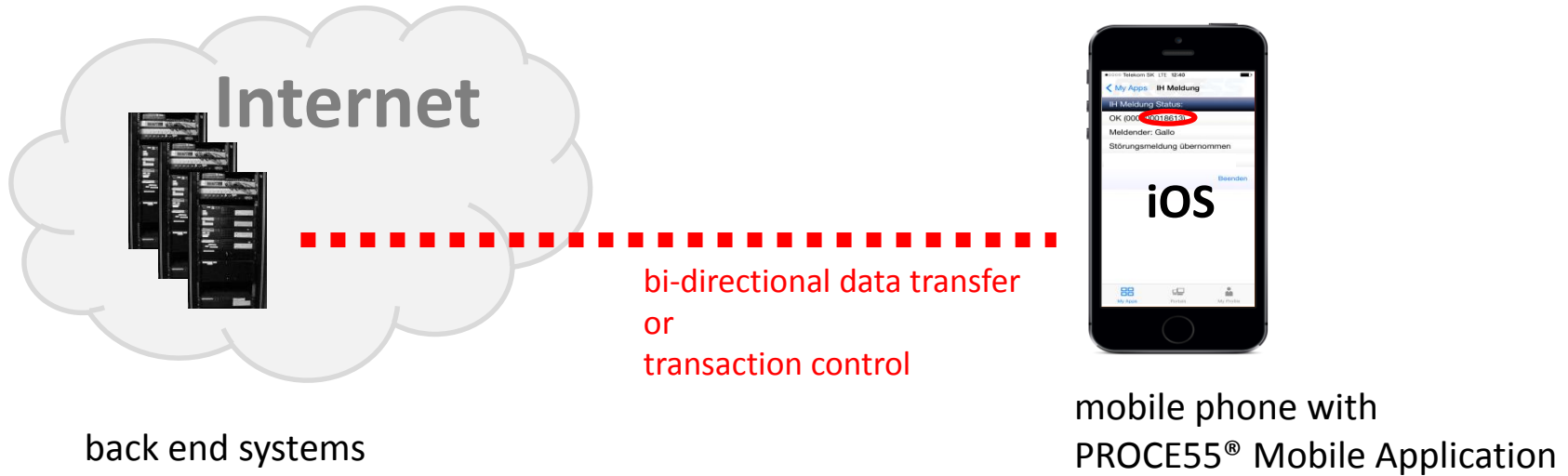


# PROCE55® Mobile: integration with back end systems

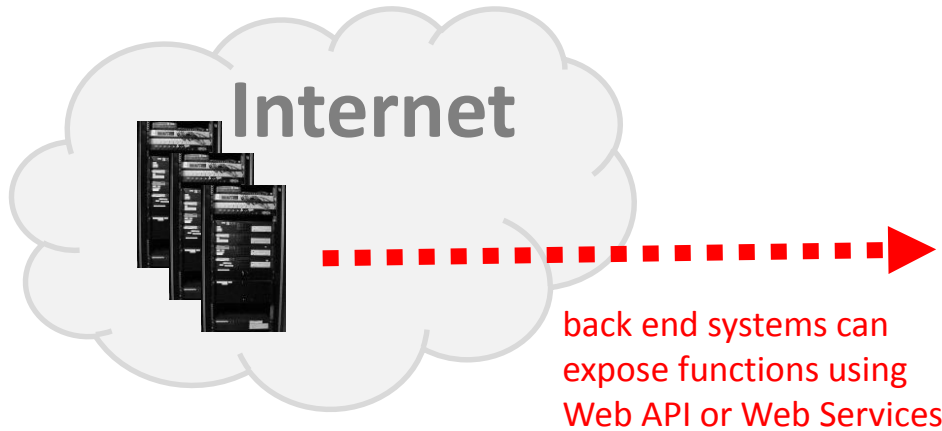


The Internet is full of resources

...you can access them using different methods,  
see the details at:

<http://proce55.com/integration.php>

# PROCE55® Mobile: integration with back end systems



Here is an example of Web API:

<http://mymemory.translated.net/doc/>

You can find the technical specification at:  
<http://mymemory.translated.net/doc/spec.php>



About MyMemory

[MyMemory in detail](#)

[CAT integration](#)

[API specifications](#)

[Search MyMemory](#)

## How-To

[Look up terms](#)

[Get a TM from a DOC](#)

[Get a TM from a TMX](#)

[Contribute with a TM](#)

## Press

[Press release](#)

[Press Kit](#)

[News](#)

## MyMemory: next generation Translation Memory technology

### What is MyMemory?

**MyMemory** is the world's largest Translation Memory. **MyMemory** is 100% free.

It has been created collecting TMs from the European Union, United Nations and aligning the best domain specific multilingual websites.

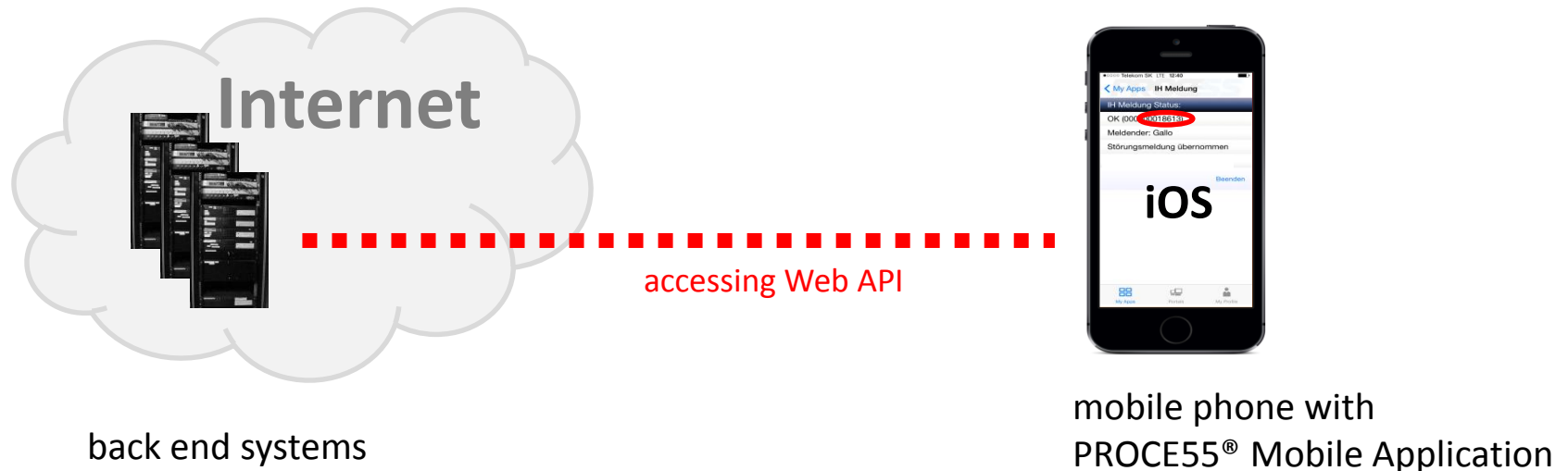
You can download memories for free in TMX format and use them with your [CAT tool](#) of choice. You can also contribute to make **MyMemory** even better with [your memories](#), or editing entries. When no human translation is found for your sentences, **MyMemory** will help you with state-of-the-art Statistical Machine Translation technology.

### Getting Started - Download your first TM! It's all free!

1. Go to <http://mymemory.translated.net> and click on [Log in](#) (username: demo - password: demo).
2. Click on [Download a TMX](#).
3. Upload a small .doc (not .docx) file you want to translate, choose source and target languages.
4. Click on [Create memory](#) then wait a few minutes while your memory is created.
5. Download your TMX file and import it in your CAT tool, making sure that the languages match.
6. Translate your document with your CAT tool.

Note. This is the easiest way to download a memory, but it does not guarantee the best results. Please have a look at the [detailed instructions](#) for creating a Translation memory from an empty TMX file.

# PROCE55® Mobile: integration with back end systems

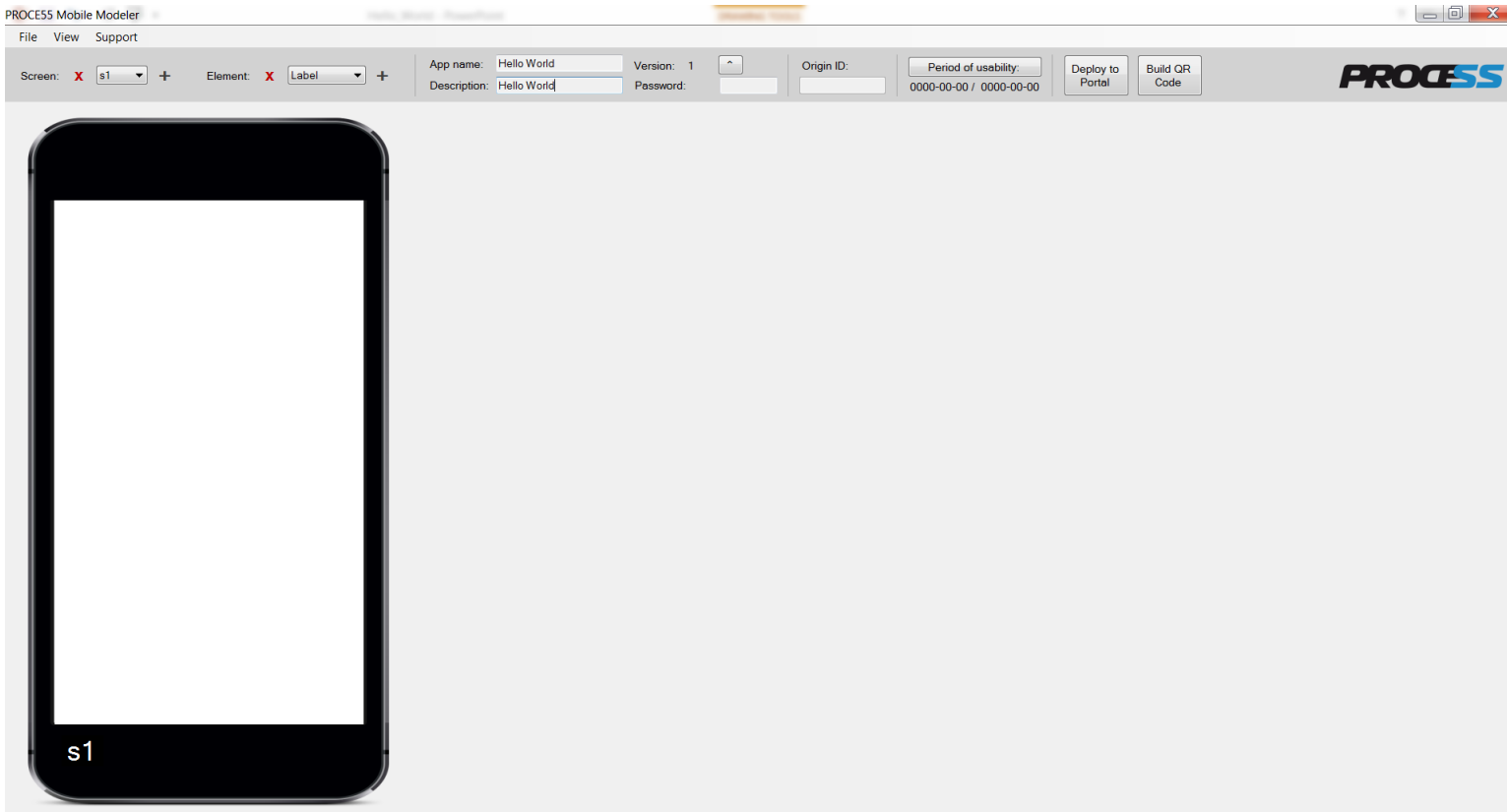


Now we will show you how to create a simple App for accessing the Web API using PROCE55® Modeler

This App shows how to access a simple Web API. It has the following functionality:

- you enter the text for translation in the input field
- you press the button and the Web API with the input parameters will be called
- the translated text will be transferred back to the App and displayed

# PROCE55® Mobile: integration with back end systems

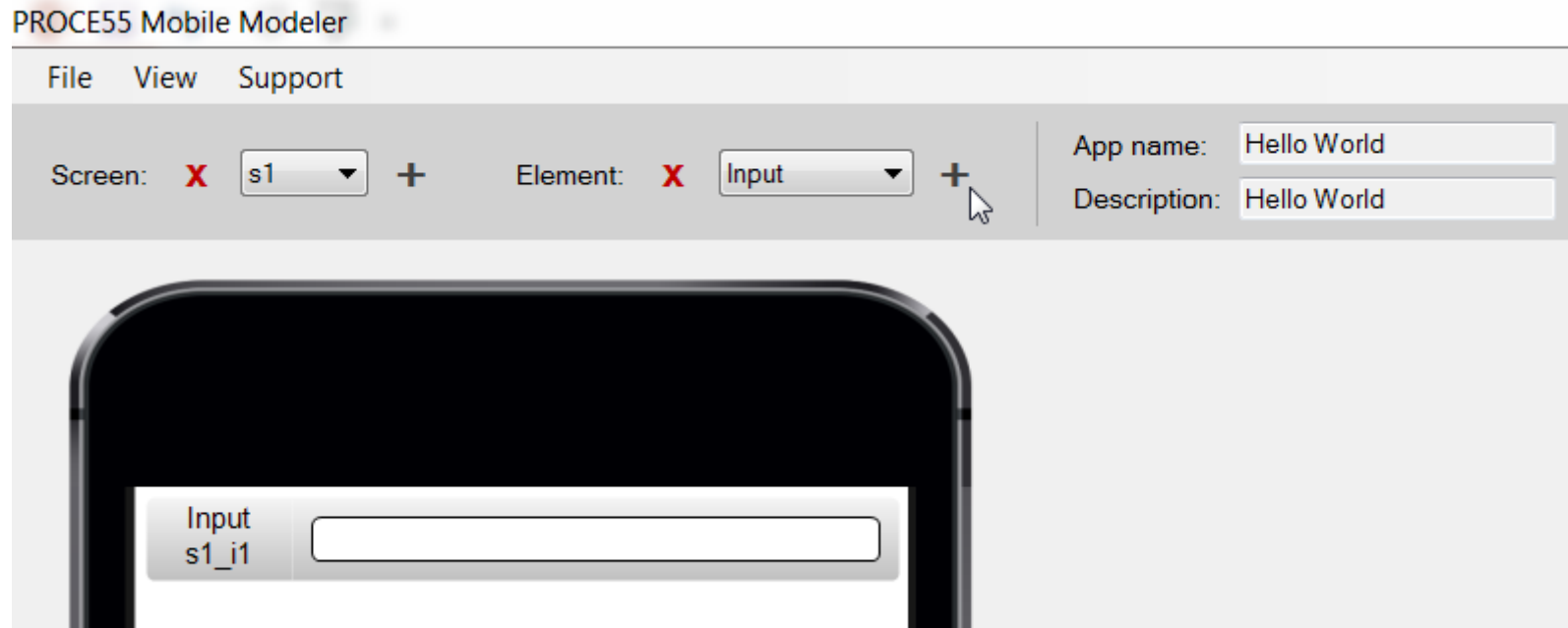


Start PROCE55® Modeler

# PROCE55® Mobile: integration with back end systems



PROCE55® Modeler  
at design time

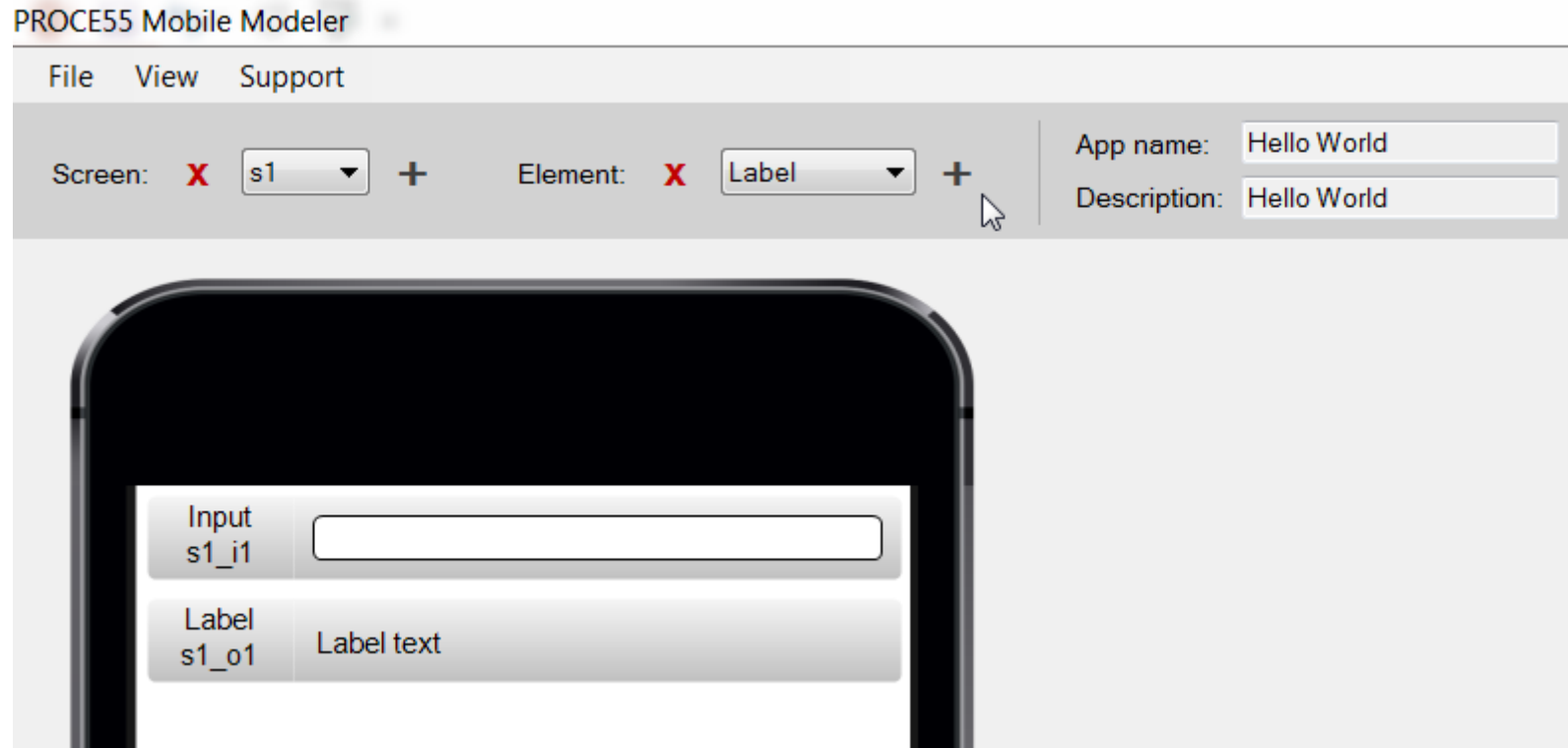


add an input field for text to be entered at run time

# PROCE55® Mobile: integration with back end systems



PROCE55® Modeler  
at design time

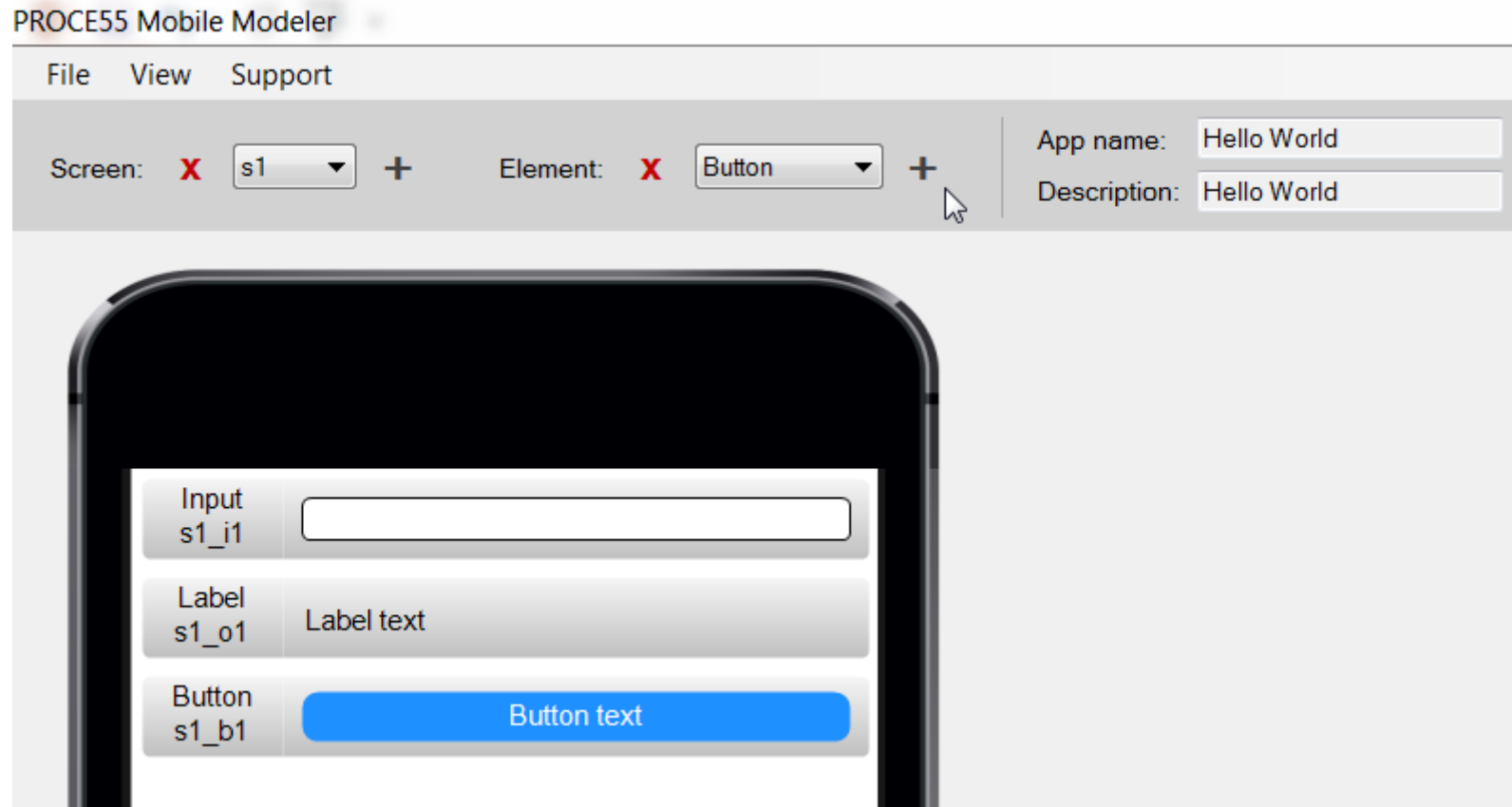


add a label for translated text returned from Web API

# PROCE55® Mobile: integration with back end systems



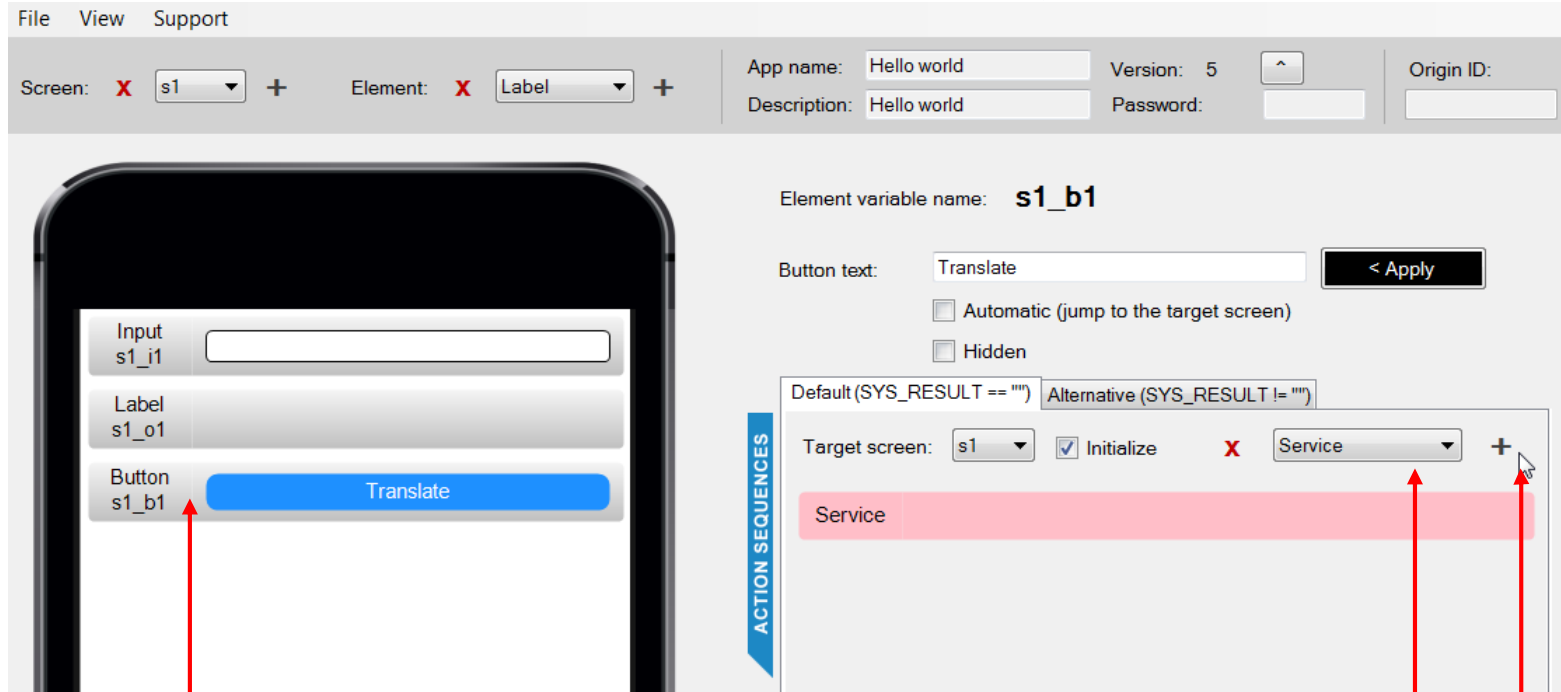
PROCE55® Modeler  
at design time



add a button for calling the Web API

# PROCE55® Mobile: integration with back end systems

PROCE55® Modeler  
at design time

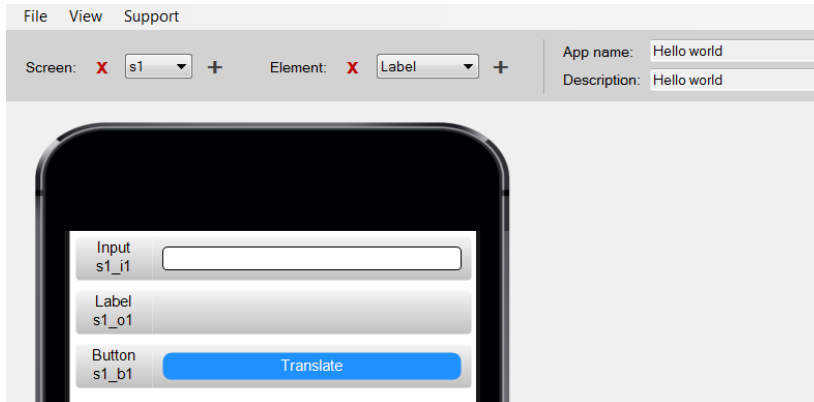


now rename the button and associate it with a service interface:

- click on the button
- select service entry from the list box
- click on +



# PROCE55® Mobile: integration with back end systems



PROCE55® Modeler at design time

Button is associated with Service (action)



## Relevant data of the service definition:

- Service Type: JSON\_GET
- URL: http://api.mymemory.translated.net/get
- Input parameter 1: q
- Input parameter 2: langpair
- Return parameter 1: /responseData/translatedText

Syntax of association of Input parameter is:  $\${s1\_i1}$  where s1\_i1 is the associated input field at the screen

Element variable name: **s1\_b1**

Button text: Translate < Apply

Automatic (jump to the target screen)

Hidden

Default (SYS\_RESULT == "") Alternative (SYS\_RESULT != "")

Target screen: s1  Initialize  Transfer

**ACTION SEQUENCES**

Service Translate API call

Service name: Translate API call < Save

Service type: JSON\_GET Encoding: UTF-8

URL: http://api.mymemory.translated.net/get

Check server certificate signature and validity (HTTPS only)

Send security token:  SHA-256

Type	Name	Value
Import	q	$\${s1\_i1}$
Import	langpair	EN DE
Export	/responseData/translatedText	s1_o1

Function Name (your choice)

URI of the Application Server

associated with the inp.field s1\_i1

fixed value

associated with the label s1\_o1

Input parameters (scalars)

Return parameter (scalar)

# PROCE55® Mobile: integration with back end systems



Service name: Translate API call < Save

Service type: JSON\_GET Encoding: UTF-8

URL: http://api.mymemory.translated.net/get

Check server certificate signature and validity (HTTPS only)

Send security token:   SHA-256

Type	Name	Value
Import	q	\${s1_i1}
Import	langpair	EN DE

- Edit
- Import from JSON response
- Import SAP BAPI from clipboard
- Clear all parameters
- Cancel

Using the right click in the parameter definition area you can call the Web API in run time, then analyze the JSON response and import the needed parameter

## Import values from JSON response

replace the provided place holders by the values according to the documentation

after creation of the correct service URI use the buttons for Web API request

Enter service URL: mory.translated.net/get?q=Hallo&langpair=EN|DE

Provide POST body (optional):

1. Execute

...or insert JSON response directly:

```
{ "responseData": { "translatedText": "Hallo", "match": 1 }, "responseDetails": "", "responseStatus": 200, "responderId": "234", "matches": [ { "id": "439168452", "segment": "Hallo", "translation": "Hallo", "quality": "74", "reference": "\\de.wikipedia.org/wiki/Hallo", "usage-count": 3, "subject": "All", "created-by": "Wikipedia", "last-updated-by": "Wikipedia", "create-date": "2012-06-29 13:45:01", "last-update-date": "2012-06-29 13:45:01", "tm_properties": null, "match": 1 }, { "id": "434265243", "segment": "hallo", "translation": "traduktor", "quality": "55", "reference": "", "usage-count": 1, "subject": "General", "created-by": "Matecat", "last-updated-by": "Matecat", "create-date": "2012-12-13 10:09:48", "last-update-date": "2012-12-13 10:09:48", "tm_properties": null, "match": 0.98 } ] }
```

2. Analyze

JSON response structure (click to pick values)

Selected value: /responseData/translatedText

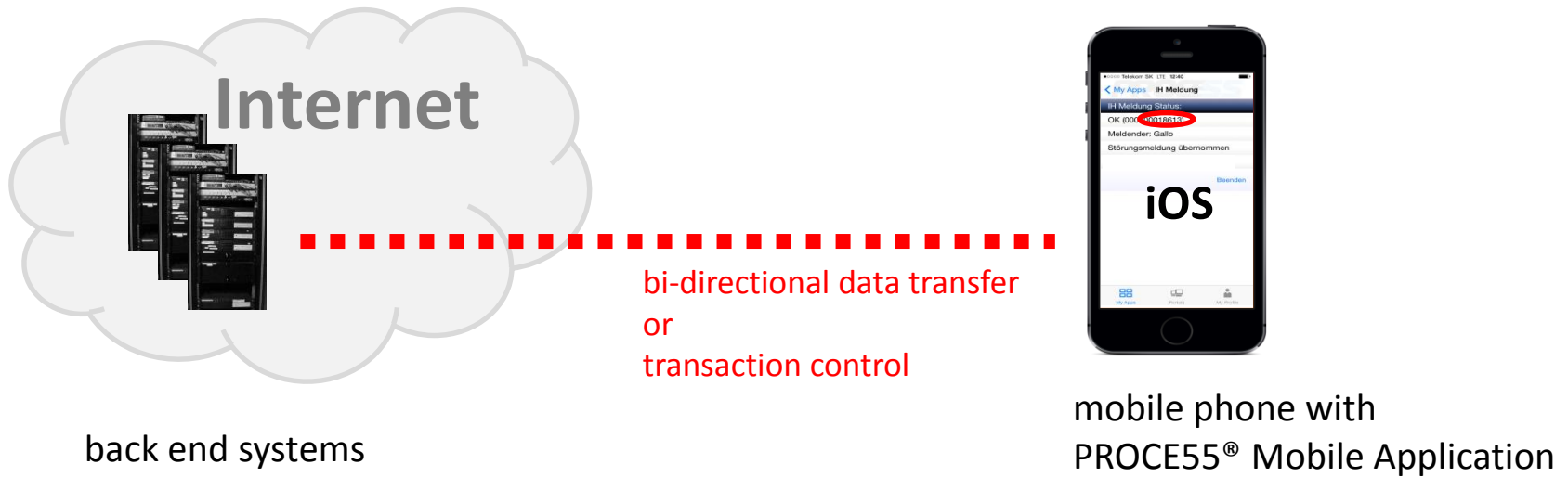
3. Use

Type	Name
Export	/responseData/translatedText

Cancel

Import

# PROCE55® Mobile: integration with back end systems



...continue at:

<http://proce55.com/integration.php>